

ST PAUL'S
COLLEGE

www.stpaulscollege.nsw.edu.au

WINDOWS 8

WIRELESS NETWORK CONFIGURATION

Follow the steps within this document to configure your Windows 8 device for the St Paul's College wireless network.

WINDOWS 8

WIRELESS NETWORK CONFIGURATION

INDEX

INDEX	1
WIRELESS NETWORK CONFIGURATION	2
STEP 1	2
STEP 2	2
STEP 3	3
STEP 4	4
STEP 5	4
STEP 6	5
STEP 7	5
STEP 8	6
STEP 9	6
STEP 10	7
STEP 11	7
STEP 12	8
STEP 13	9
STEP 14	9
STEP 15	9
STEP 16	10
STEP 17	10
STEP 18	11
STEP 19	11
STEP 20	11

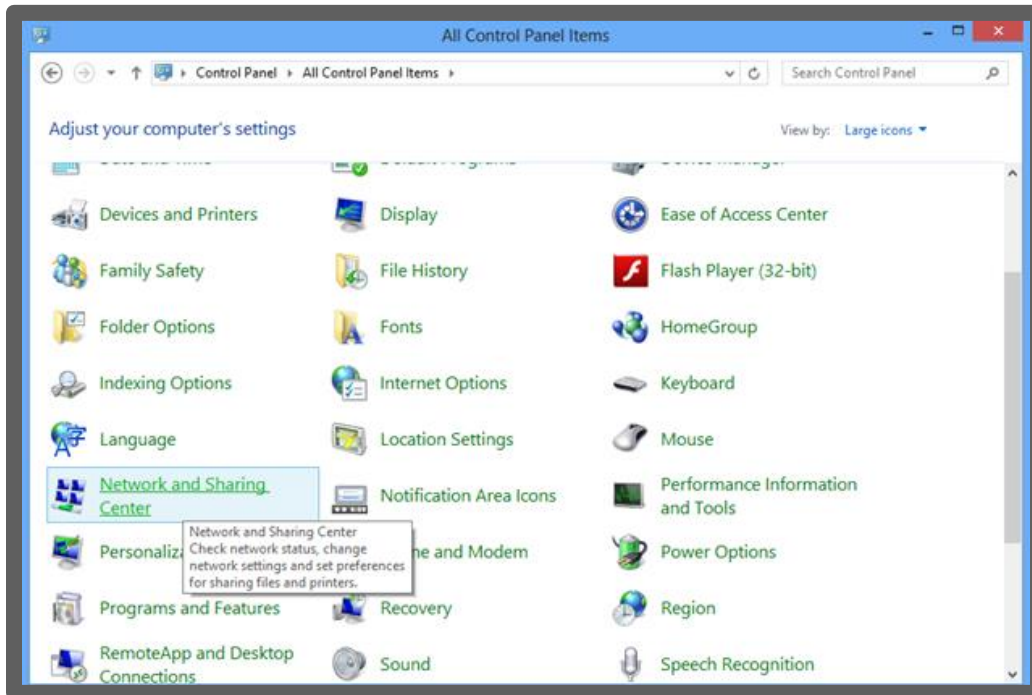
HELPDESK

This document and other procedures can be found on Moodle by clicking the IT Helpdesk Link

WIRELESS NETWORK CONFIGURATION

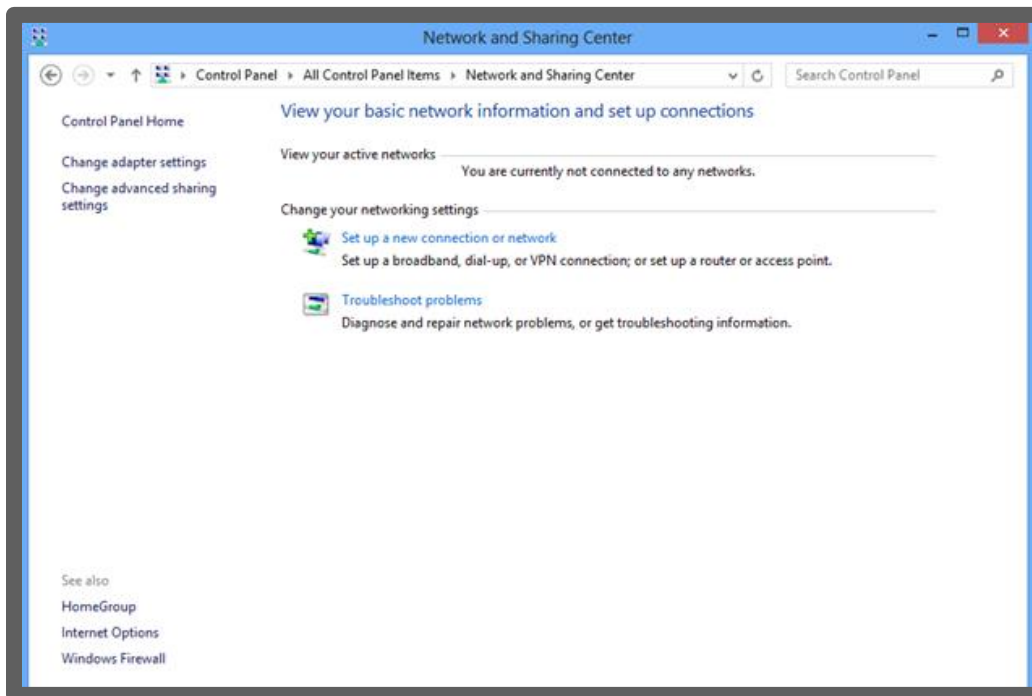
STEP 1

Go to the Control Panel. Then change "View by:" to Large icons so the dialog box will appear as:



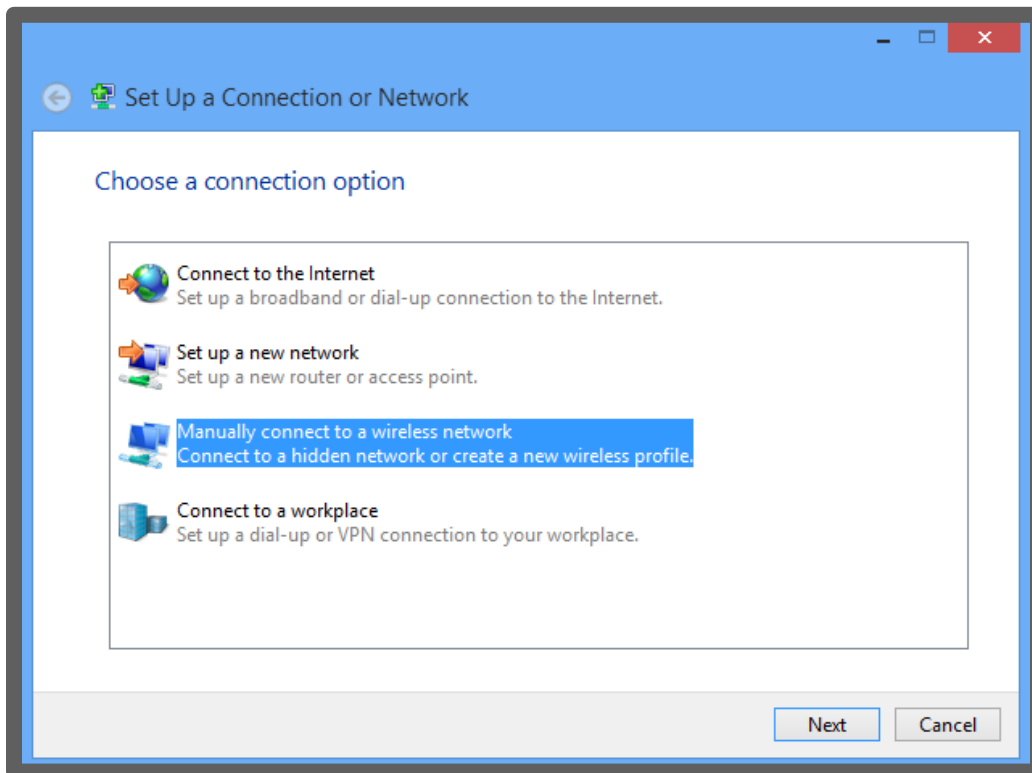
STEP 2

Open "Network and Sharing Center". Select "Set up a new connection or network"



STEP 3

When the dialog opens select "Manually connect to a wireless network" and click Next.



STEP 4

The "Manually connect to a wireless network" dialog box appears. Make the following entries in that box.

- a. Enter "SPCWIFI" as the "Network name".
- b. Select "WPA2-Enterprise" as the "Security type".
- c. Select "AES" as the "Encryption type".
- d. Leave "Security Key" blank.

The dialog box will look like:

Manually connect to a wireless network

Enter information for the wireless network that you want to add

Network name: SPCWIFI

Security type: WPA2-Enterprise

Encryption type: AES

Security Key: Hide characters

Start this connection automatically

Connect even if the network is not broadcasting

Warning: If you select this option, your computer's privacy might be at risk.

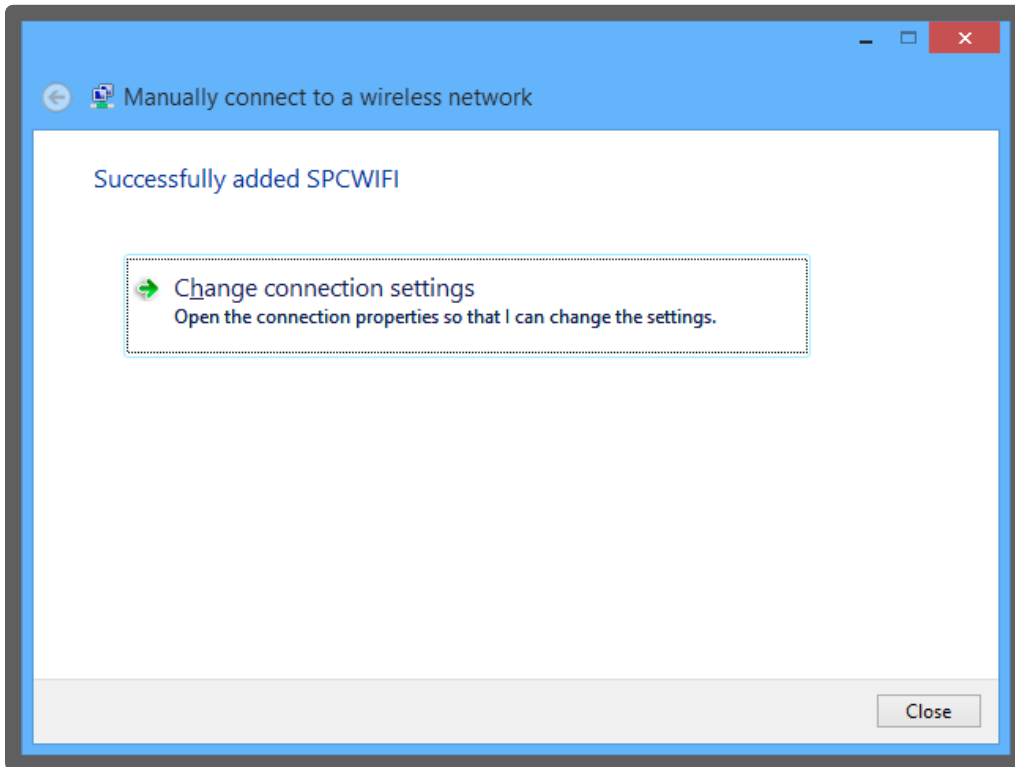
Next Cancel

STEP 5

Click Next.

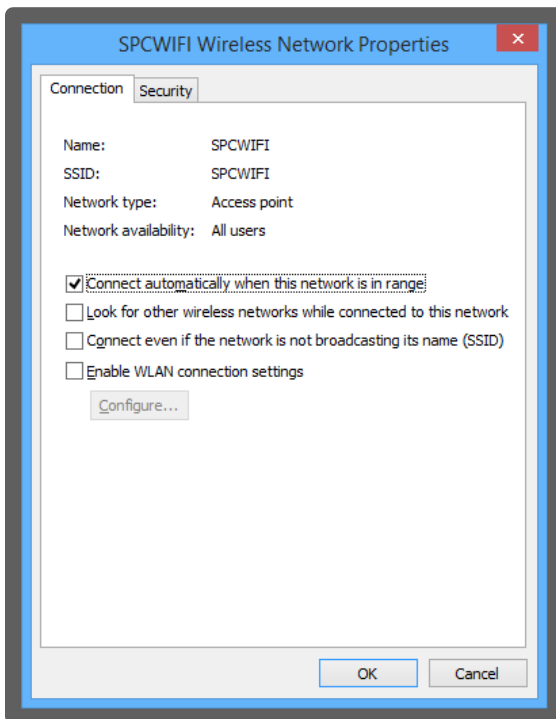
STEP 6

When the following dialog box appears, click on "Change connection settings".



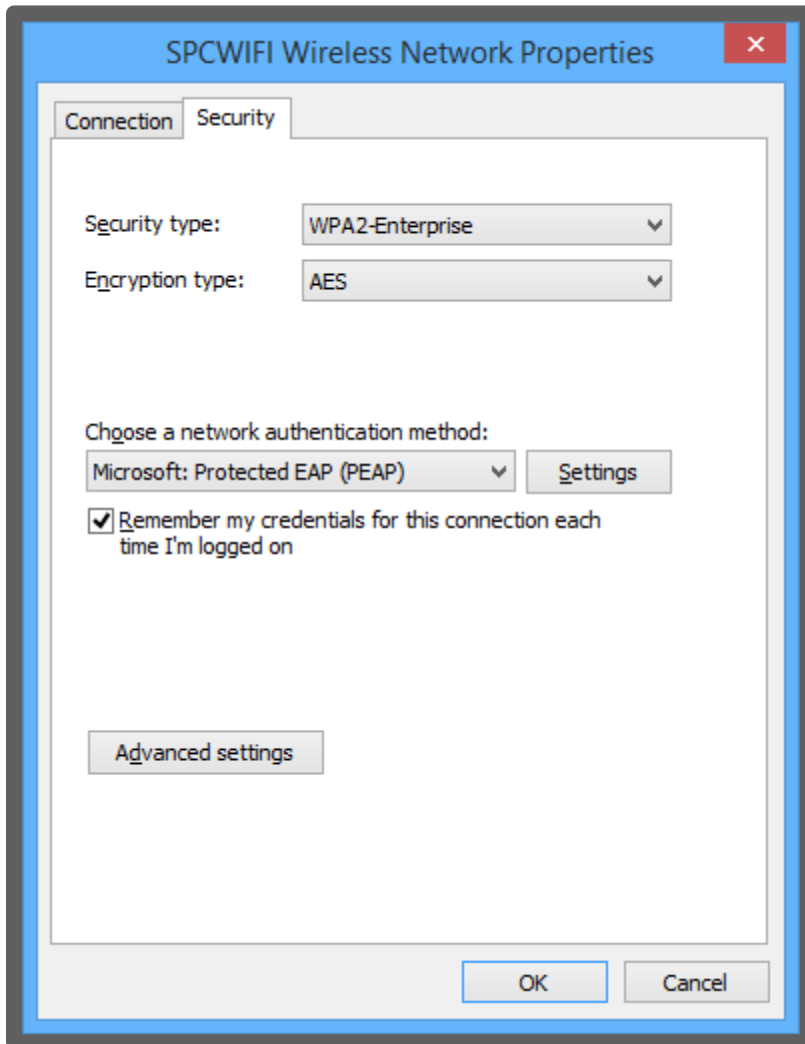
STEP 7

The "SPCWIFI Wireless Network Properties" will be next.



STEP 8

Click on the "Security" tab. Verify that the dialog box looks like the one below. Make appropriate changes if it does not.

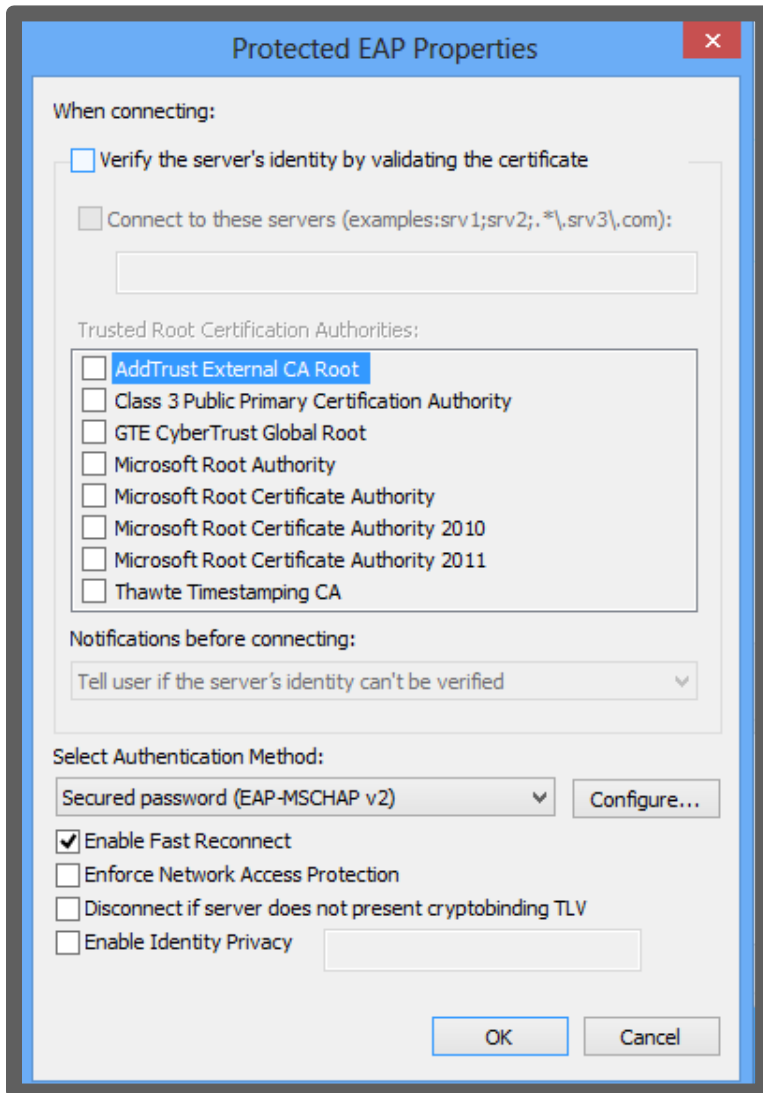


STEP 9

Click on the "Settings" button to display the next dialog box.

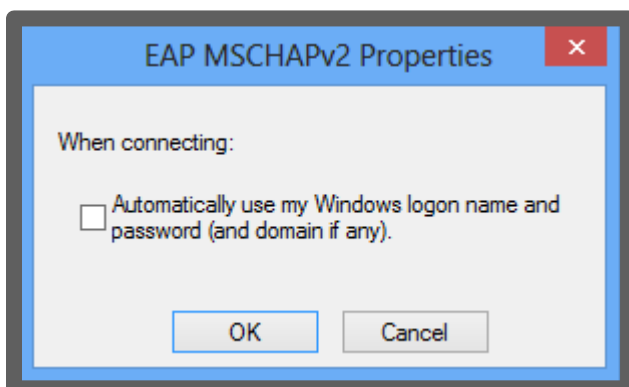
STEP 10

Make sure the "Verify the server's identity by validating the certificate" is not checked. Click the "Configure..." button.



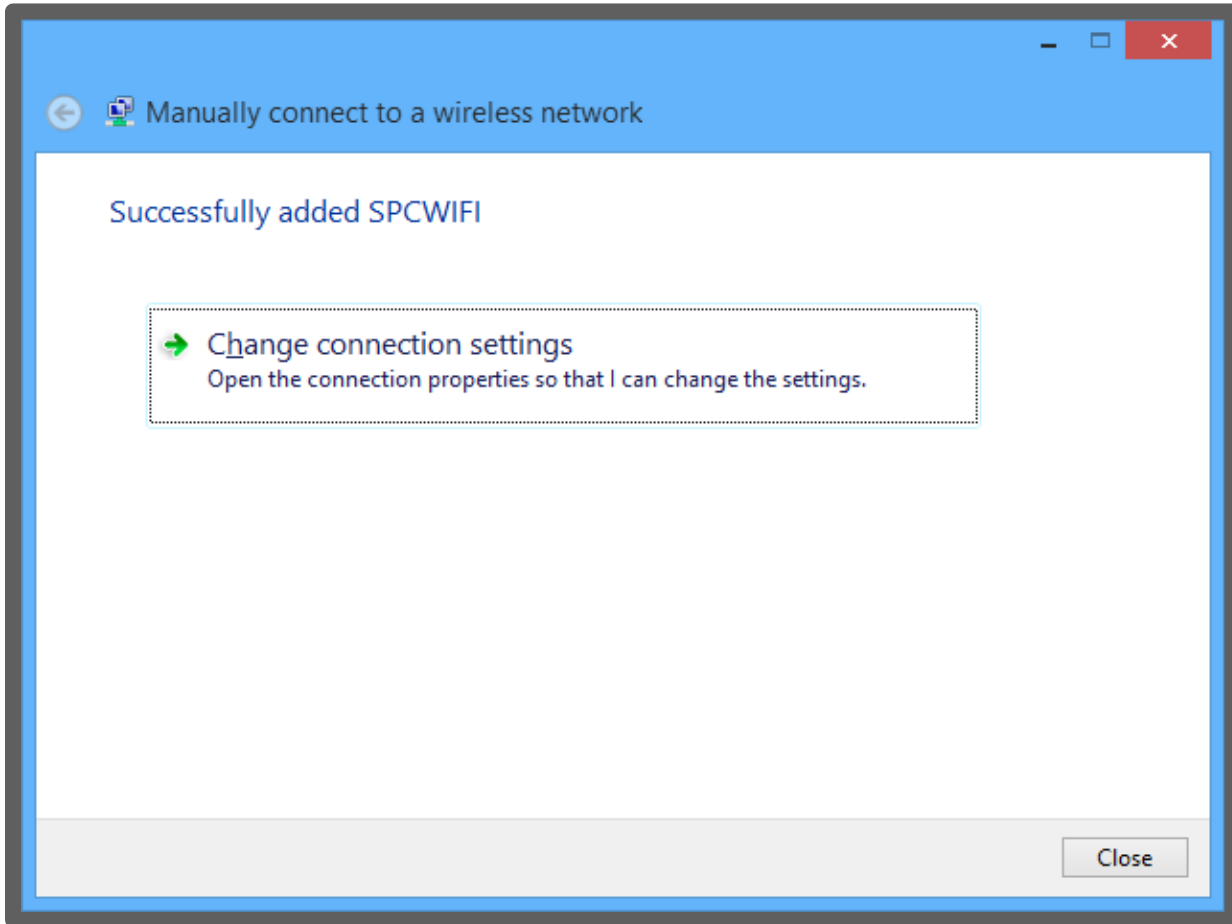
STEP 11

Verify the "When connecting" box is not checked.



STEP 12

Click "OK" three times to complete the changes. The "Manually connect to a wireless network" dialog box will appear and will indicate that SPCWIFI has been successfully added. Click the "Close" button.

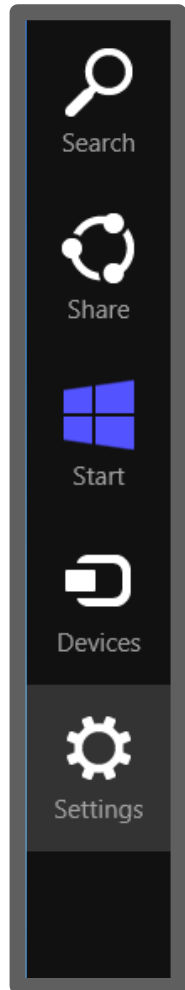
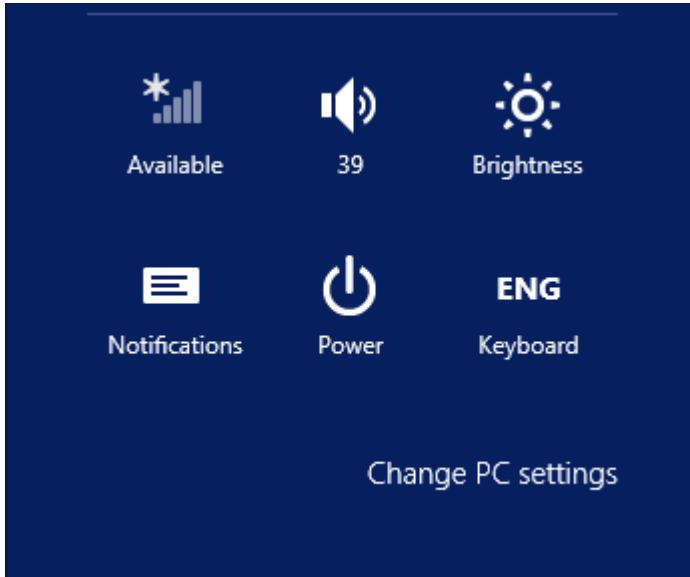


STEP 13

Go to the lower right corner of the Start screen. Click there to display the charms then select "Settings". As seen to the right →

STEP 14

When the "Settings" display, click on the "Available" wireless charm.



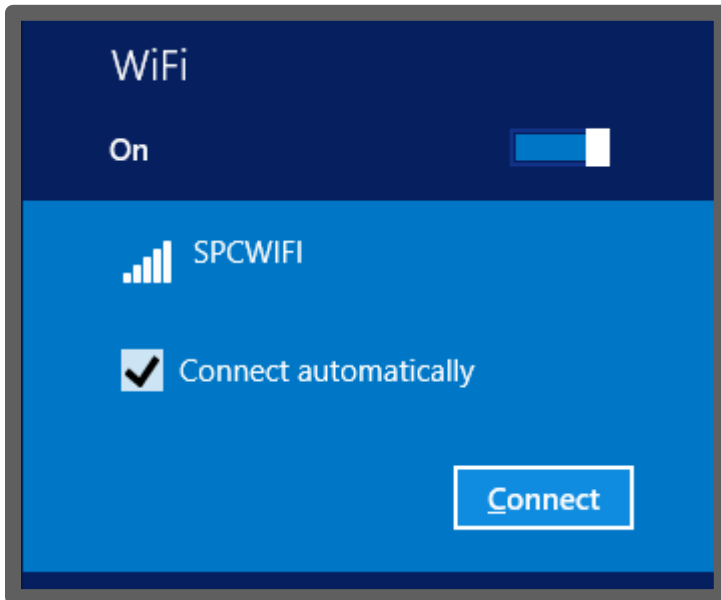
STEP 15

The list of available wireless networks will appear. SPCWIFI is the preferred secure wireless network to use. All others are not supported by St Paul's College.



STEP 16

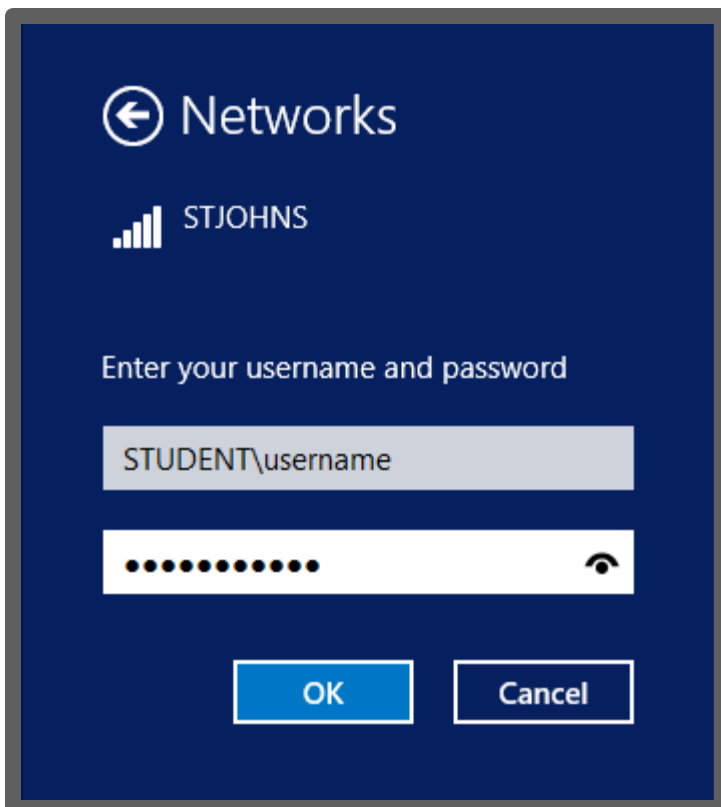
Verify that "Connect Automatically" is checked. Then click on "Connect".



STEP 17

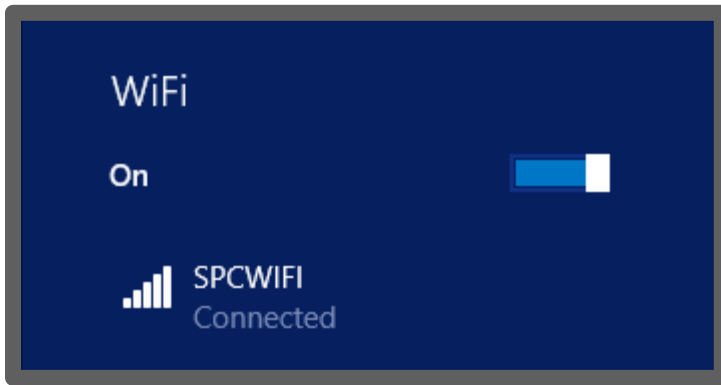
A "Network Authentication" dialog box comes into view.

- Enter your username using the format of "student\username" and your password.
- Click "OK".



STEP 18

Look at the Wireless Network settings to verify the connection is completed.

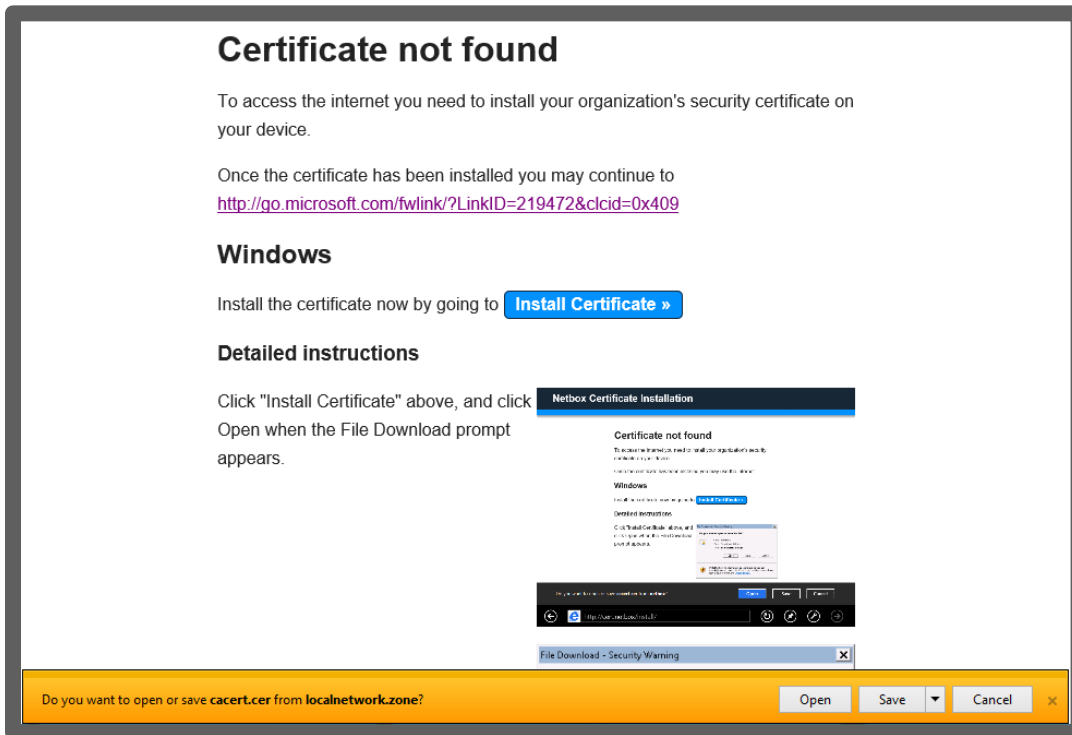


STEP 19

The SPCWIFI wireless connection will work automatically when you are on campus and near a wireless access point (basically the whole campus).

STEP 20

When you first attempt to access the internet from your chosen web browser you will be prompted to install a certificate. Follow the detailed instructions on the webpage. If you do not install the certificate you will not be able to access websites beginning with HTTPS.

A screenshot of a web browser displaying a 'Certificate not found' warning. The page text reads: 'To access the internet you need to install your organization's security certificate on your device. Once the certificate has been installed you may continue to <http://go.microsoft.com/fwlink/?LinkId=219472&clcid=0x409>'. Below this, there is a section titled 'Windows' with the instruction: 'Install the certificate now by going to [Install Certificate >](#)'. A section titled 'Detailed instructions' says: 'Click "Install Certificate" above, and click Open when the File Download prompt appears.' The screenshot also shows a 'Netbox Certificate Installation' window with the same 'Certificate not found' message and a 'File Download - Security Warning' dialog box at the bottom asking 'Do you want to open or save cacert.cer from localnetwork.zone?' with 'Open', 'Save', and 'Cancel' buttons.