

ST PAUL'S  
COLLEGE

[www.stpaulscollege.nsw.edu.au](http://www.stpaulscollege.nsw.edu.au)

# WINDOWS 7

## WIRELESS NETWORK CONFIGURATION

Follow the steps within this document to configure your Windows 7 device for the St Paul's College wireless network.

# WINDOWS 7

## WIRELESS NETWORK CONFIGURATION

### INDEX

|                                      |    |
|--------------------------------------|----|
| INDEX .....                          | 1  |
| WIRELESS NETWORK CONFIGURATION ..... | 2  |
| STEP 1 .....                         | 2  |
| STEP 2 .....                         | 2  |
| STEP 3 .....                         | 3  |
| STEP 4 .....                         | 4  |
| STEP 5 .....                         | 4  |
| STEP 6 .....                         | 5  |
| STEP 7 .....                         | 5  |
| STEP 8 .....                         | 6  |
| STEP 9 .....                         | 6  |
| STEP 10 .....                        | 7  |
| STEP 11 .....                        | 7  |
| STEP 12 .....                        | 8  |
| STEP 13 .....                        | 9  |
| STEP 14 .....                        | 9  |
| STEP 15 .....                        | 9  |
| STEP 16 .....                        | 10 |

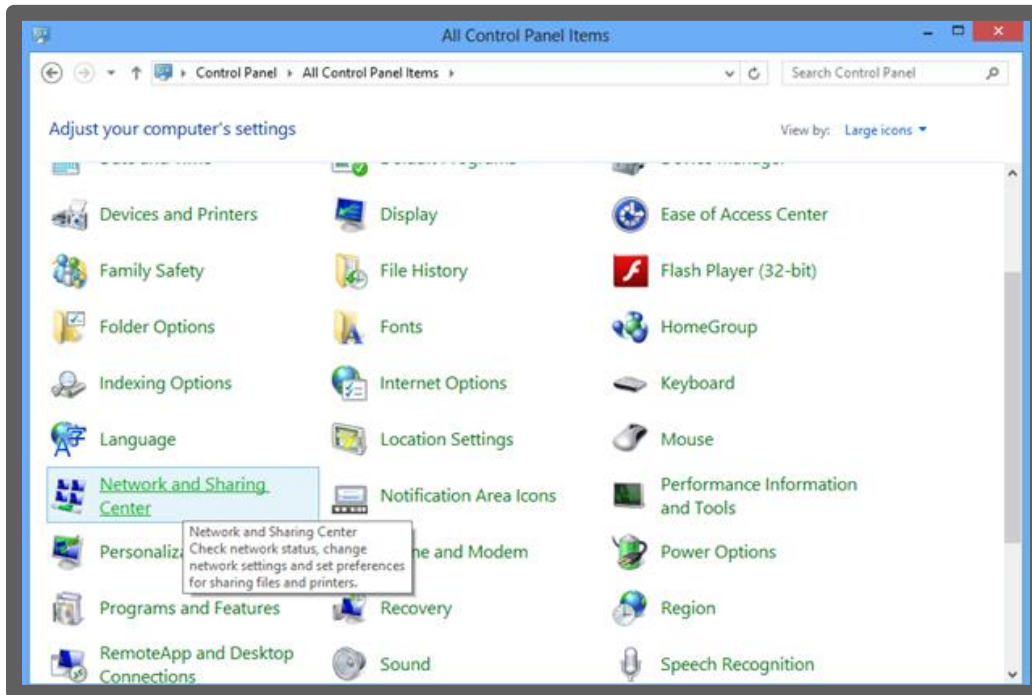
## HELPDESK

This document and other procedures can be found on  
[byod.stpaulscollege.nsw.edu.au](http://byod.stpaulscollege.nsw.edu.au)

# WIRELESS NETWORK CONFIGURATION

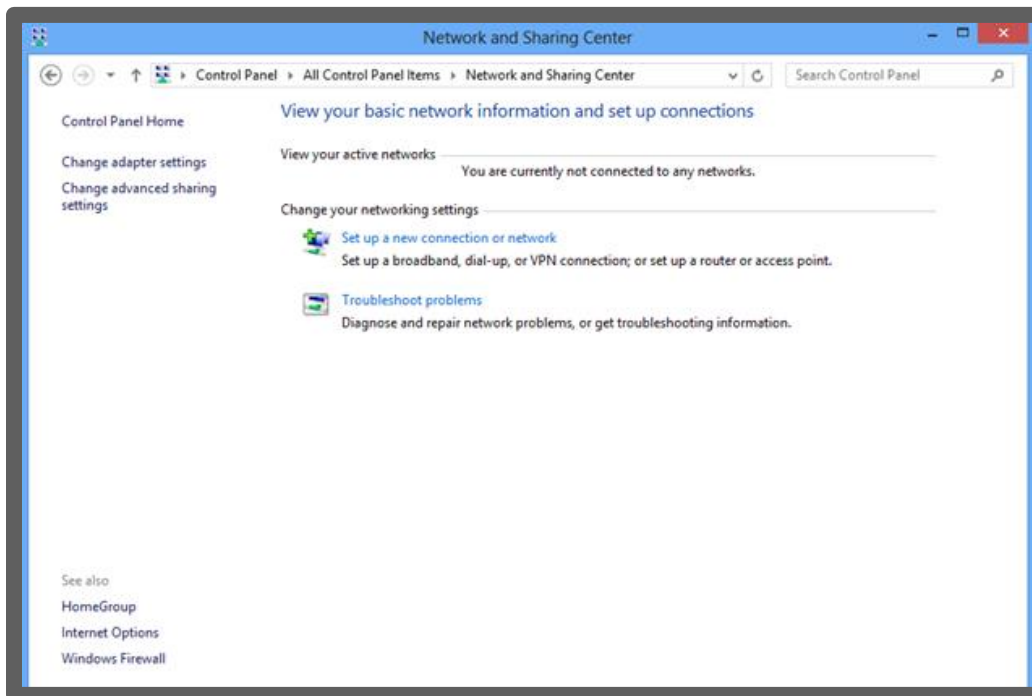
## STEP 1

Go to the Control Panel. Then change "View by:" to Large icons so the dialog box will appear as:



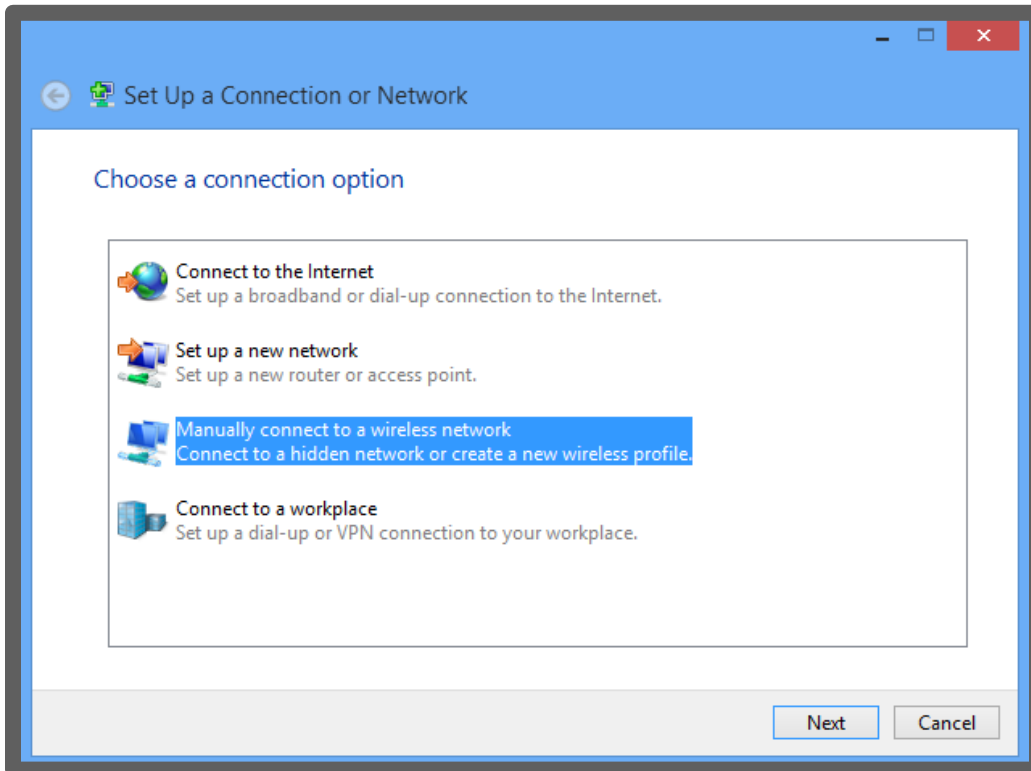
## STEP 2

Open "Network and Sharing Center". Select "Set up a new connection or network"



### STEP 3

When the dialog opens select "Manually connect to a wireless network" and click Next.



## STEP 4

The "Manually connect to a wireless network" dialog box appears. Make the following entries in that box.

- Enter "SPCWIFI" as the "Network name".
- Select "WPA2-Enterprise" as the "Security type".
- Select "AES" as the "Encryption type".
- Leave "Security Key" blank.

The dialog box will look like:

Manually connect to a wireless network

Enter information for the wireless network that you want to add

Network name: SPCWIFI

Security type: WPA2-Enterprise

Encryption type: AES

Security Key:   Hide characters

Start this connection automatically

Connect even if the network is not broadcasting

Warning: If you select this option, your computer's privacy might be at risk.

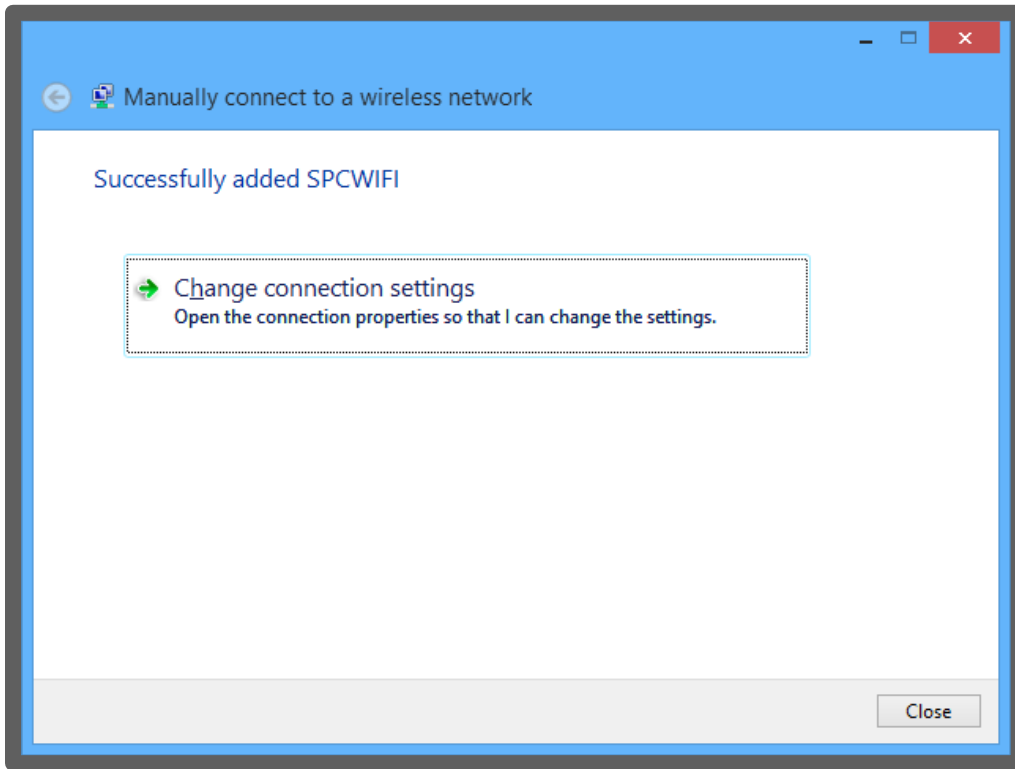
Next Cancel

## STEP 5

Click Next.

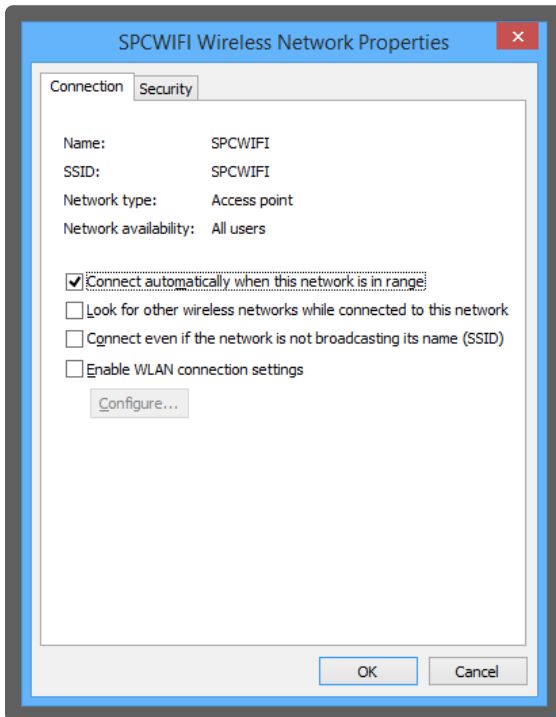
### STEP 6

When the following dialog box appears, click on "Change connection settings".



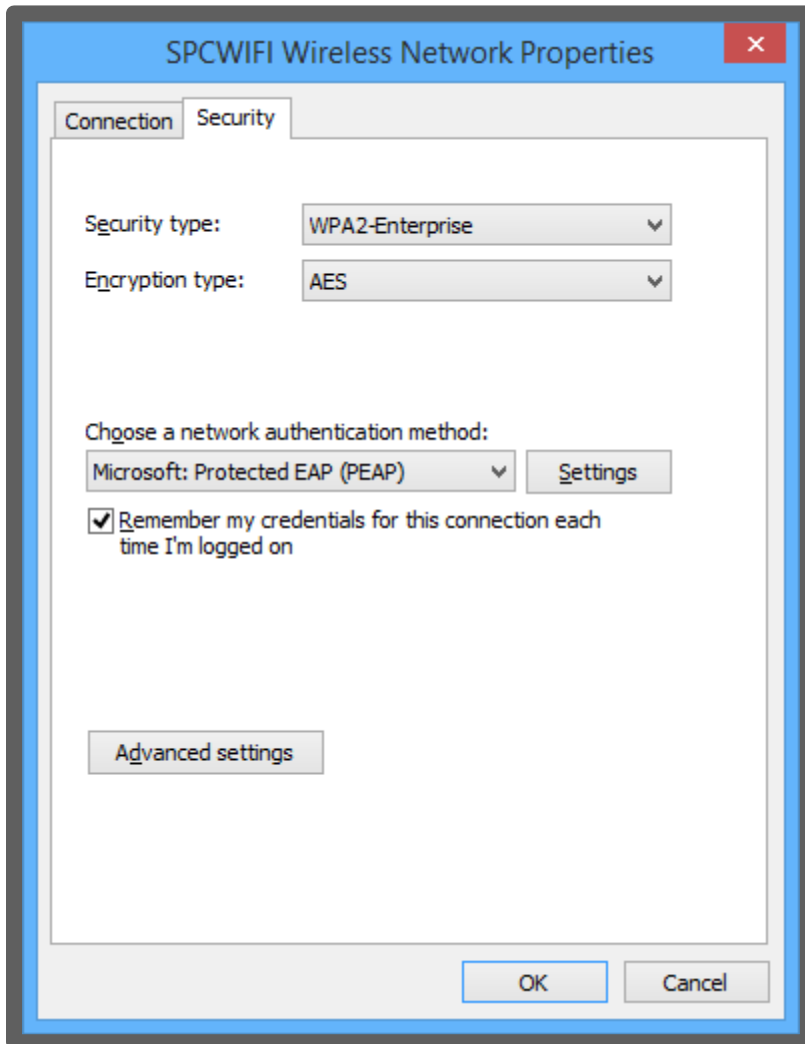
### STEP 7

The "SPCWIFI Wireless Network Properties" will be next.



### STEP 8

Click on the "Security" tab. Verify that the dialog box looks like the one below. Make appropriate changes if it does not.

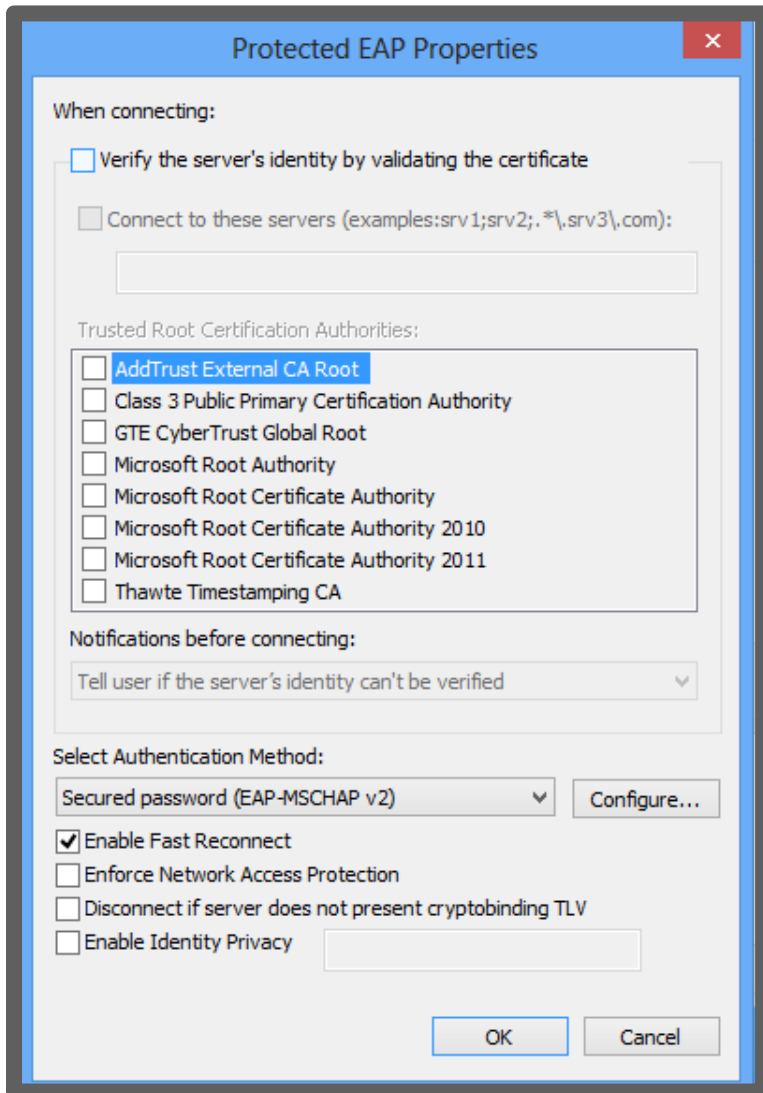


### STEP 9

Click on the "Settings" button to display the next dialog box.

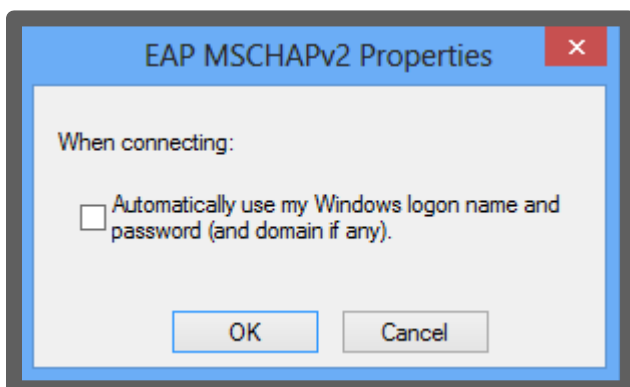
### STEP 10

Make sure the "Verify the server's identity by validating the certificate" is not checked. Click the "Configure..." button.



### STEP 11

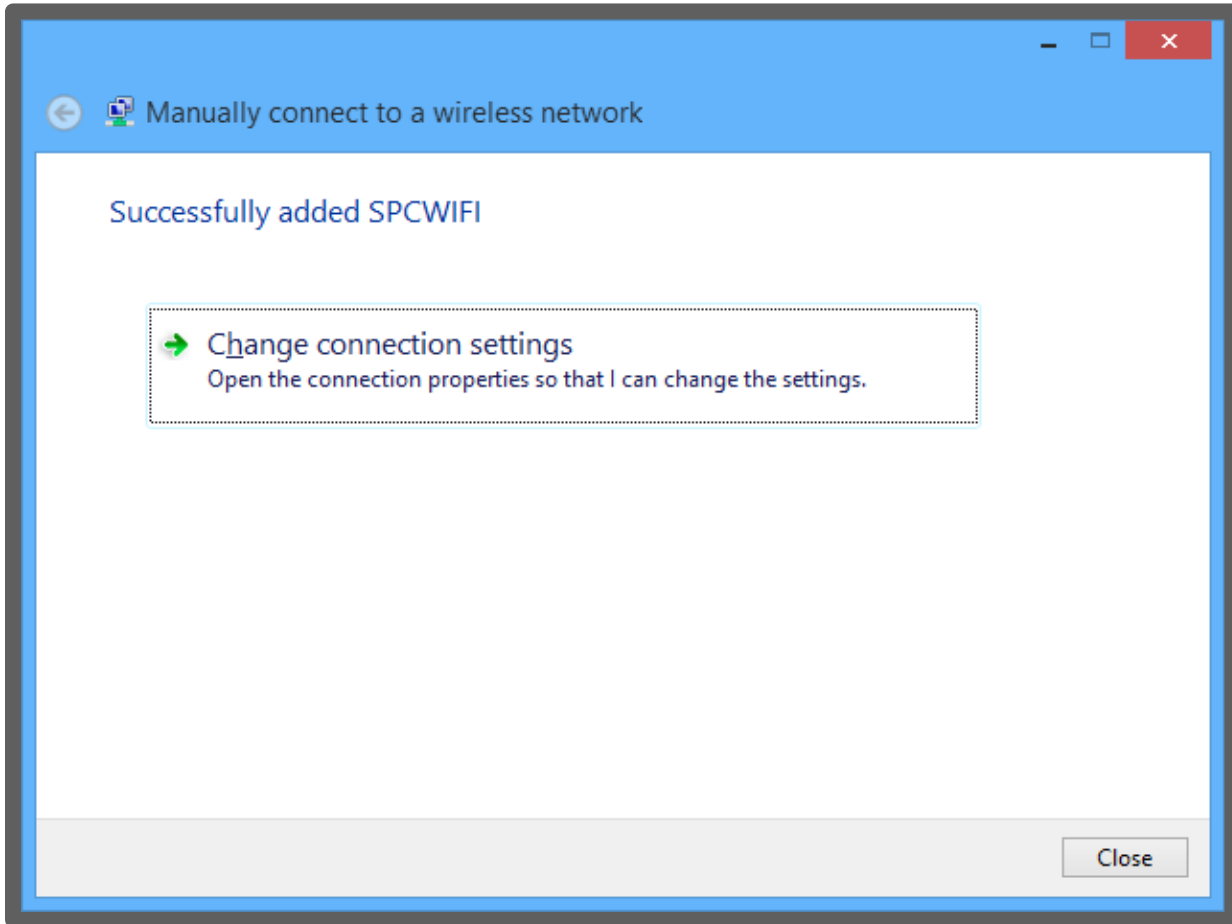
Verify the "When connecting" box is not checked.





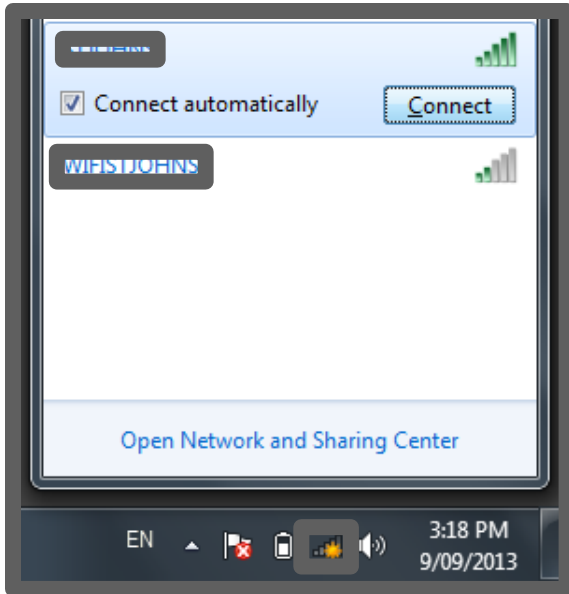
**STEP 12**

Click "OK" three times to complete the changes. The "Manually connect to a wireless network" dialog box will appear and will indicate that SPCWIFI has been successfully added. Click the "Close" button.



### STEP 13

Go to the lower right corner of the screen. Click on the wireless icon to display the currently visible networks. Verify that "Connect Automatically" is checked. Then click on "Connect".



### STEP 14

A "Network Authentication" dialog box comes into view.

- a. Enter your username using the format of "student\username" and your password.
- b. Click "OK".

Look at the Wireless Network settings to verify the connection is completed.

### STEP 15

The SPCWIFI wireless connection will work automatically when you are on campus and near a wireless access point (basically the whole campus).

## STEP 16

When you first attempt to access the internet from your chosen web browser you will be prompted to install a certificate. Follow the detailed instructions on the webpage. If you do not install the certificate you will not be able to access websites beginning with HTTPS.

### Certificate not found

To access the internet you need to install your organization's security certificate on your device.

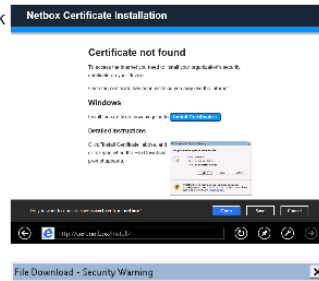
Once the certificate has been installed you may continue to <http://go.microsoft.com/fwlink/?LinkId=219472&clcid=0x409>

### Windows

Install the certificate now by going to [Install Certificate »](#)

### Detailed instructions

Click "Install Certificate" above, and click Open when the File Download prompt appears.



Do you want to open or save cacert.cer from localnetwork.zone?

Open

Save

Cancel